



**FRONT ELEVATION A**  
SCALE: 1/8" = 1'-0"

TOP OF PLATE  
8'-1 1/8"  
TOP OF DECK  
TOP OF PLATE  
9'-1 1/8"  
TOP OF DECK  
TOP OF SILL  
7'-9 1/2"  
TOP OF SLAB



**LEFT ELEVATION**  
SCALE: 1/8" = 1'-0"



**REAR ELEVATION**  
SCALE: 1/8" = 1'-0"

TOP OF PLATE  
8'-1 1/8"  
TOP OF DECK  
TOP OF PLATE  
9'-1 1/8"  
TOP OF DECK  
TOP OF SILL  
7'-9 1/2"  
TOP OF SLAB



**RIGHT ELEVATION**  
SCALE: 1/8" = 1'-0"

**BON TON BUILDERS, INC.**  
1060 BALTIMORE STREET  
HANOVER, PA 17331  
717.637.4136

PROJECT:

**CRYSTAL  
PLAN**

DATE:  
AUGUST 7, 2012  
REV: FEBRUARY 18, 2013

JOB NUMBER:  
12-39



**FRONT ELEVATION B**  
SCALE: 1/8" = 1'-0"

NOTE:  
FOYER WALL TO BE PUSHED  
BACK 2'-0" WITH THIS ELEVATION

BON TON BUILDERS, INC.  
1060 BALTIMORE STREET  
HANOVER, PA 17331  
717.637.4136

PROJECT:

**CRYSTAL  
PLAN**

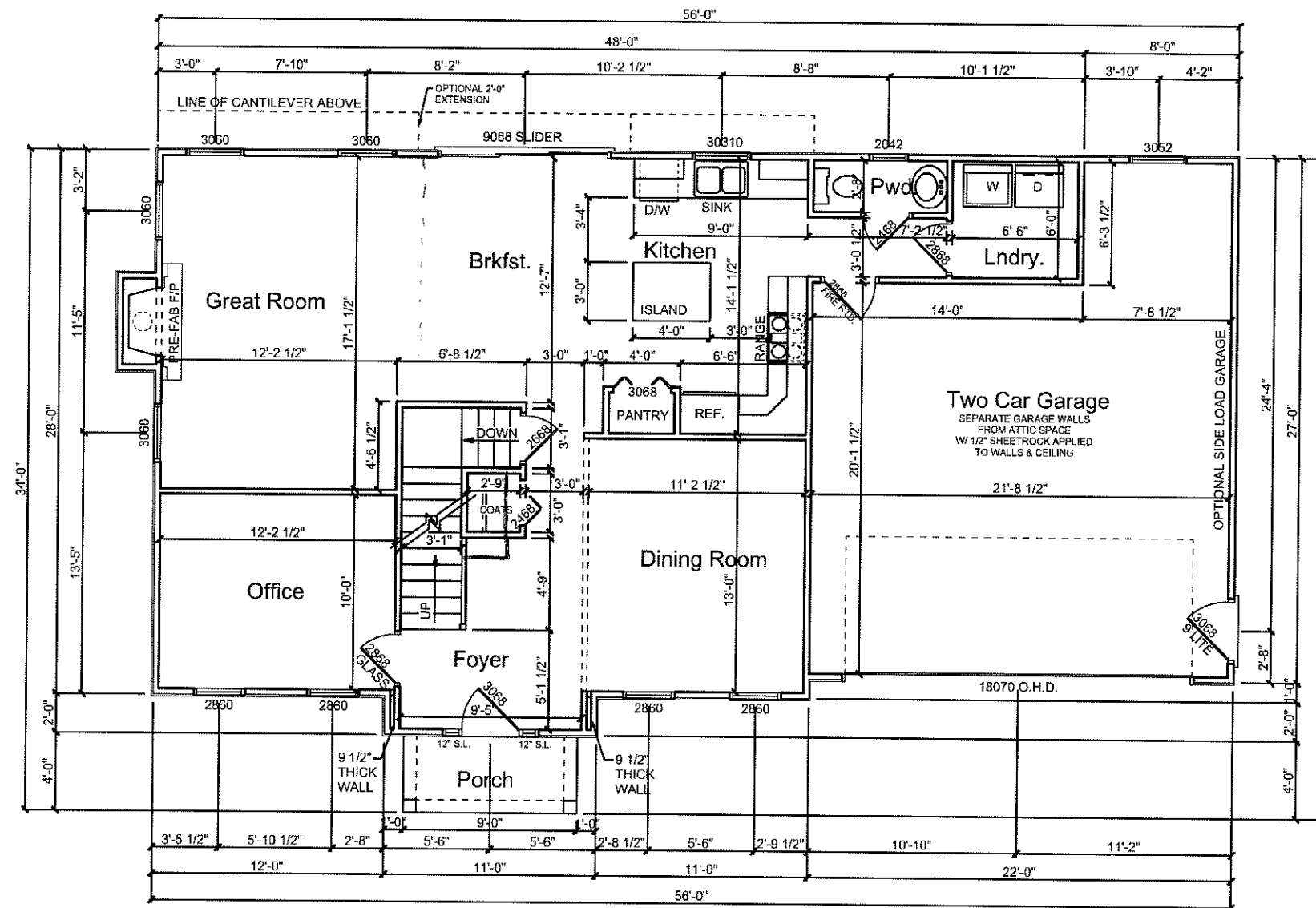
DATE:

AUGUST 7, 2012  
REV: FEBRUARY 18, 2013

JOB NUMBER:

12-39

NOTE:  
 - 9'-0" CEILING HEIGHT  
 - ALL WINDOWS TO BE KAS-KEL  
 200 DBL. HUNG - VERIFY ALL  
 ROUGH OPENINGS



**FIRST FLOOR PLAN**  
 1,066 SQUARE FEET      SCALE: 1/8" = 1'-0"

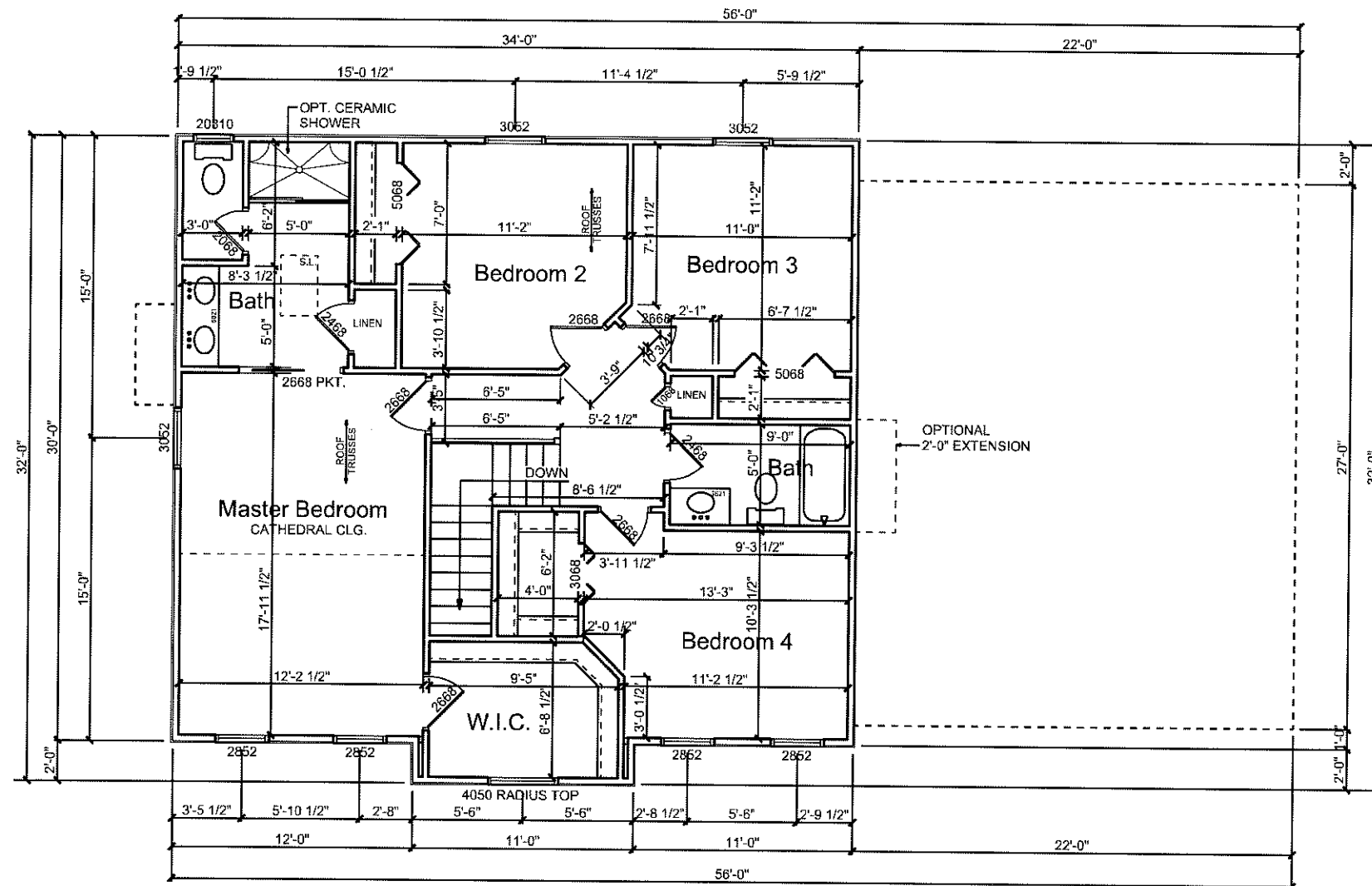
**BON TON BUILDERS, INC.**  
 1060 BALTIMORE STREET  
 HANOVER, PA 17331  
 717.637.4136

**PROJECT:**

**CRYSTAL  
 PLAN**

**DATE:**  
 AUGUST 7, 2012  
 REV: FEBRUARY 19, 2013

**JOB NUMBER:**  
 12-39



**SECOND FLOOR PLAN**  
 1,001 SQUARE FEET      SCALE: 1/8" = 1'-0"

**BON TON BUILDERS, INC.**  
 1060 BALTIMORE STREET  
 HANOVER, PA 17331  
 717.637.4136

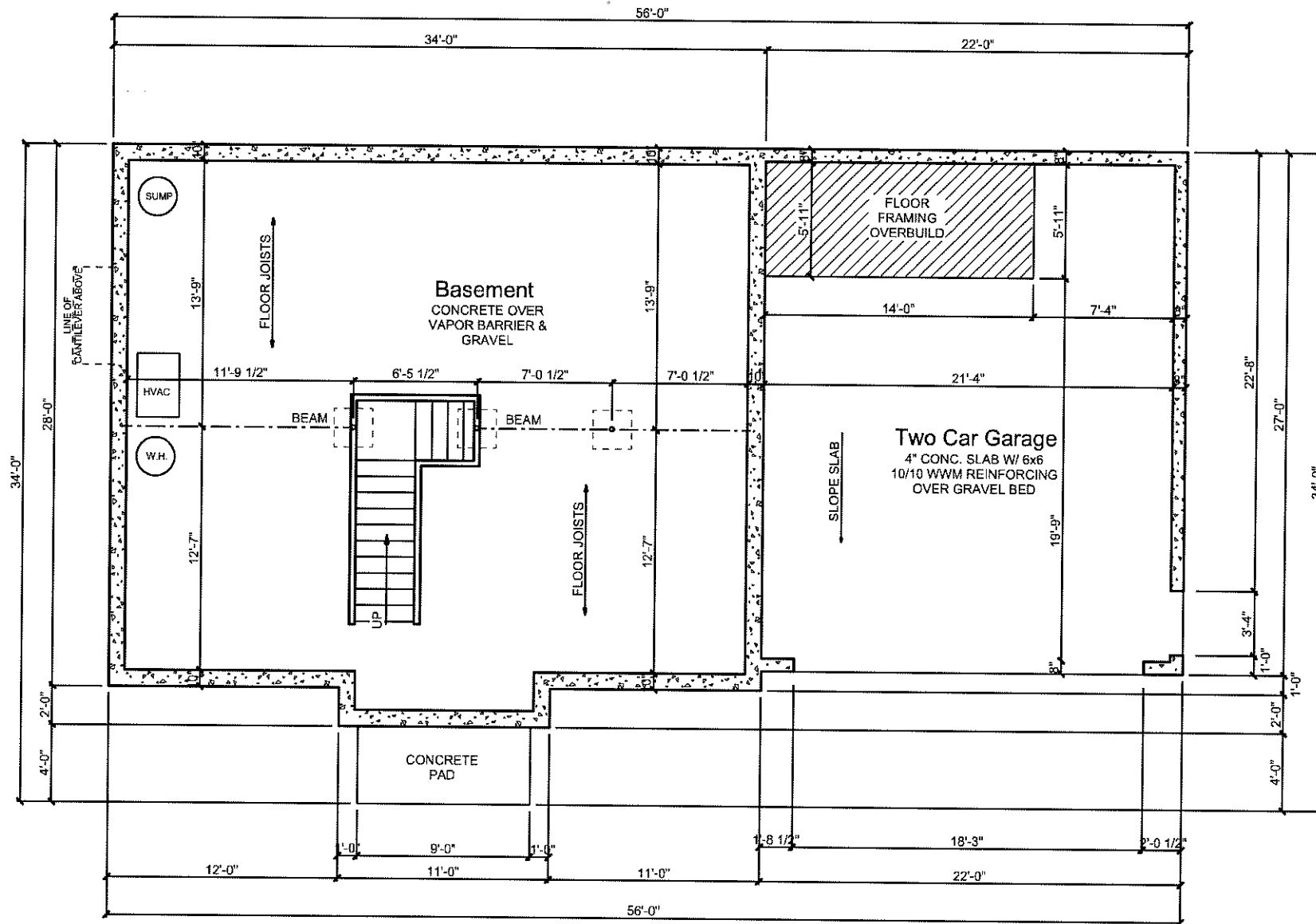
**PROJECT:**

**CRYSTAL  
 PLAN**

**DATE:**  
 AUGUST 7, 2012  
 REV: FEBRUARY 19, 2013

**JOB NUMBER:**  
 12-39

NOTE:  
 - 8'-0" HIGH X 8" WIDE POURED  
 CONCRETE FOUNDATION WALLS  
 REINFORCEMENT: HORIZONTAL -  
 (1) #4 BAR 12" FROM TOP & (1) #4  
 BAR NEAR MID-HEIGHT OF WALL  
 VERTICAL - #4 BAR @ 48" O.C.



BON TON BUILDERS, INC.  
 1060 BALTIMORE STREET  
 HANOVER, PA 17331  
 717.637.4136

PROJECT:

CRYSTAL  
 PLAN

DATE:  
 AUGUST 7, 2012  
 REV: FEBRUARY 18, 2013

JOB NUMBER:  
 12-39

5 OF 5

**BASEMENT PLAN**

SCALE: 1/8" = 1'-0"