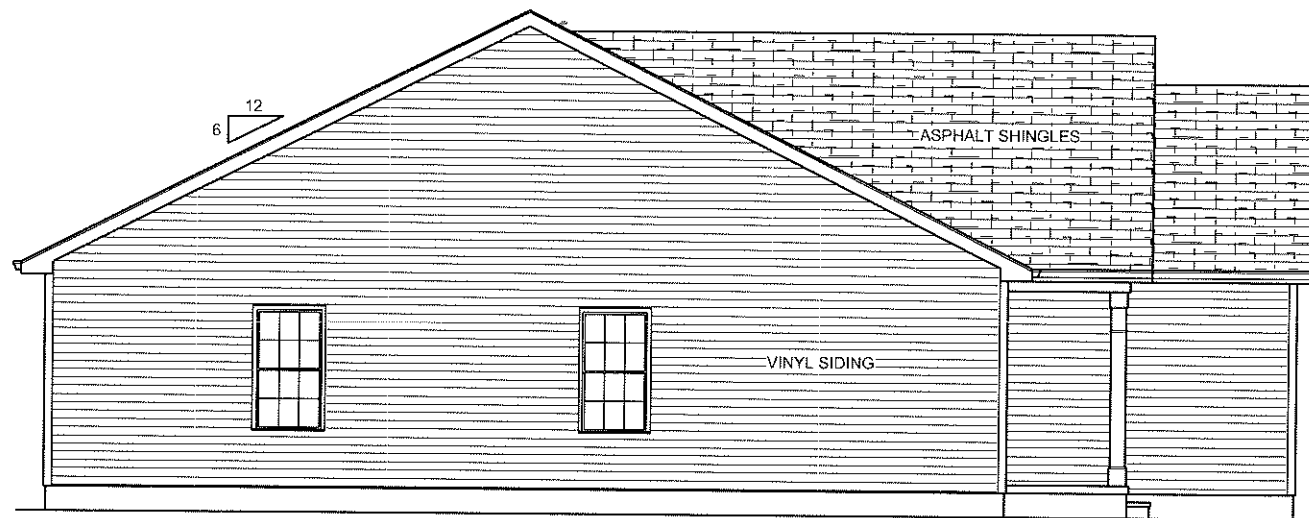




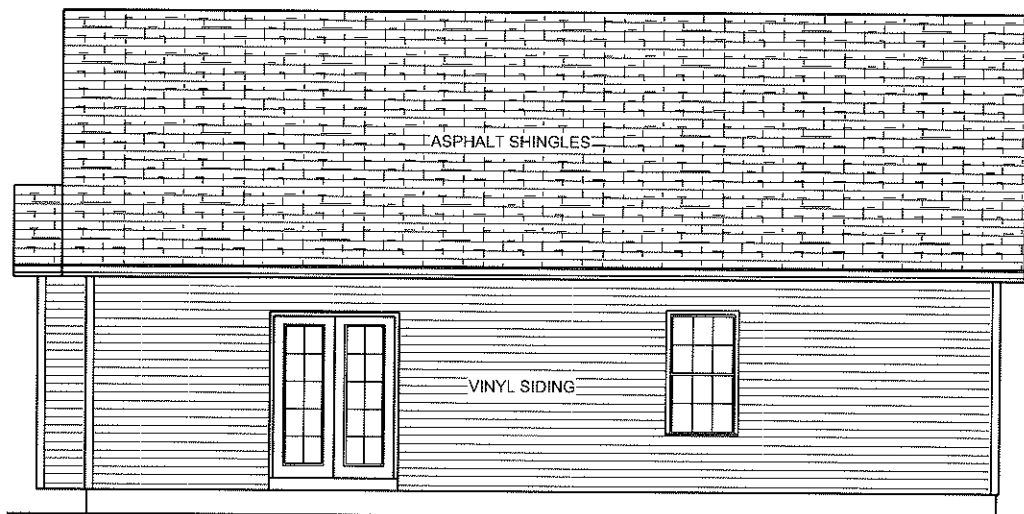
**FRONT ELEVATION**

SCALE: 1/8" = 1'-0"



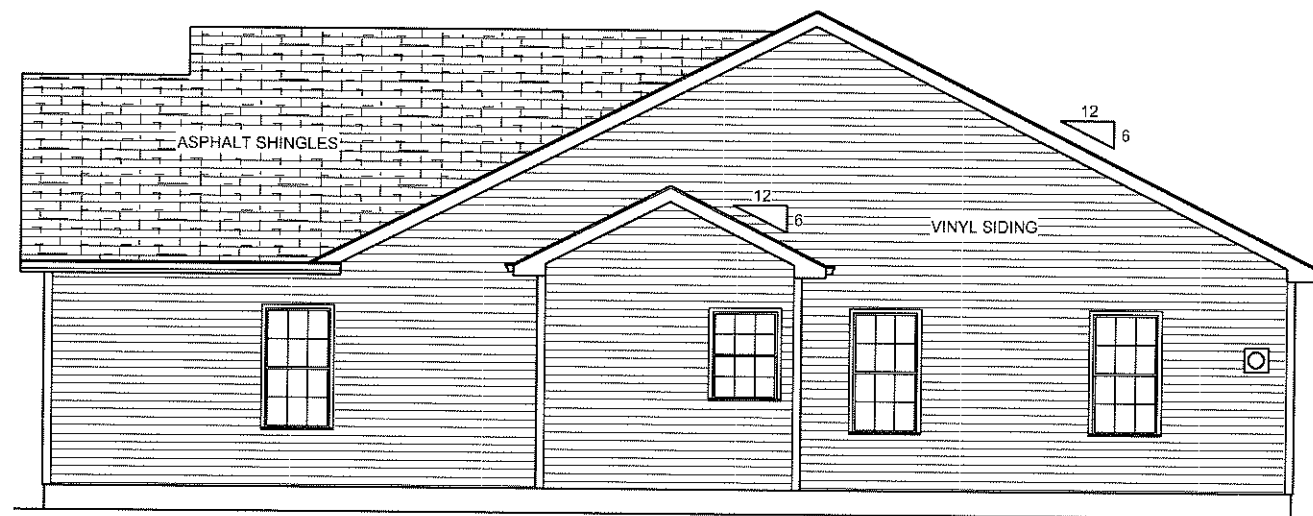
**LEFT ELEVATION**

SCALE: 1/8" = 1'-0"



**REAR ELEVATION**

SCALE: 1/8" = 1'-0"



**RIGHT ELEVATION**

SCALE: 1/8" = 1'-0"

**BON TON BUILDERS, INC.**  
 1060 BALTIMORE STREET  
 HANOVER, PA 17331  
 717.637.4136

**PROJECT:**

**906 SHERWOOD  
 DRIVE  
 HANOVER, PA 17331**

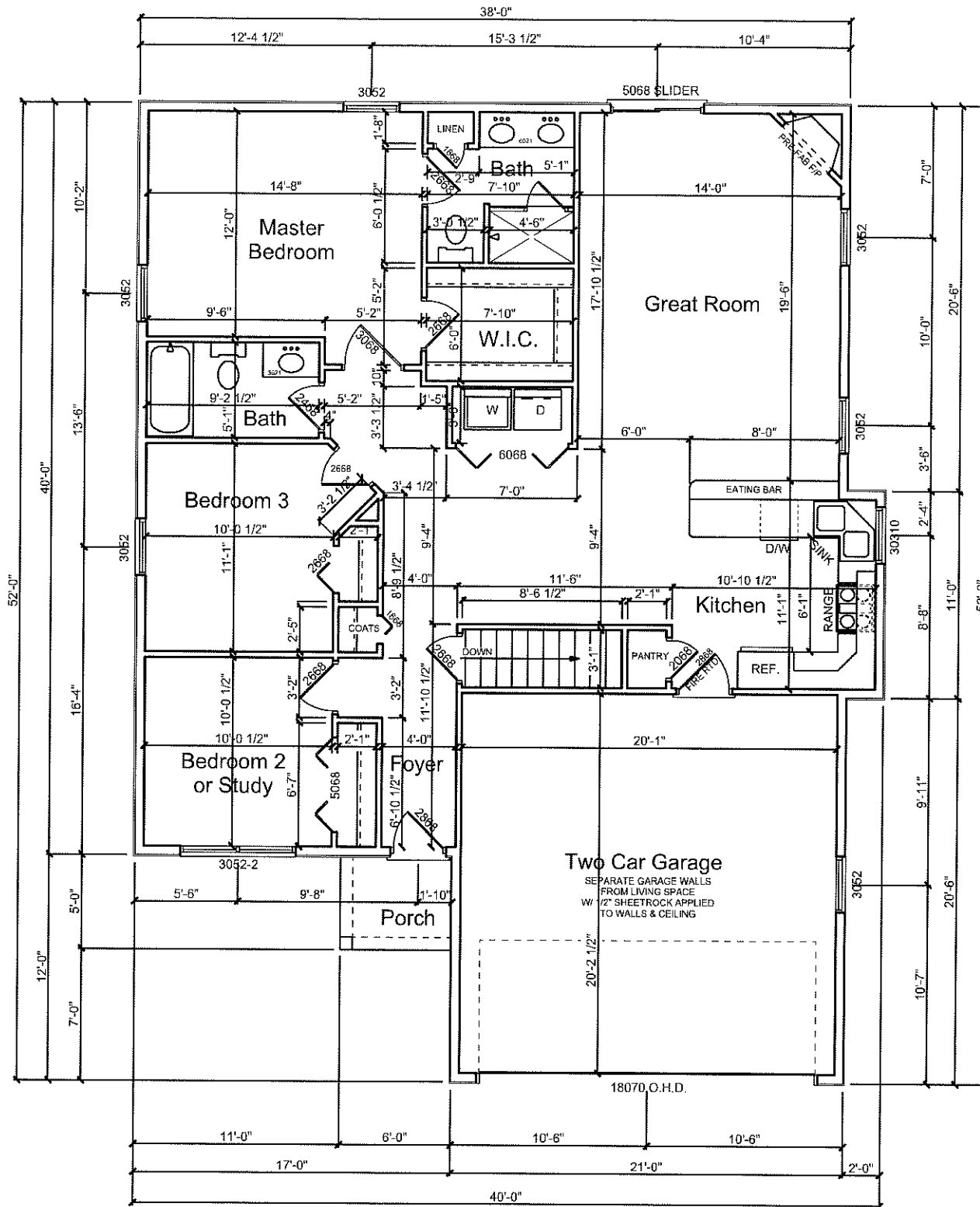
**DATE:**

MARCH 13, 2013

**JOB NUMBER:**

13-15

NOTE:  
 - 8'-0" CEILING HEIGHT  
 - ALL WINDOWS TO BE KAS-KEL  
 200 DBL. HUNG - VERIFY ALL  
 ROUGH OPENINGS



**BON TON BUILDERS, INC.**  
 1060 BALTIMORE STREET  
 HANOVER, PA 17331  
 717.637.4136

PROJECT:

**906 SHERWOOD  
 DRIVE  
 HANOVER, PA 17331**

DATE:

MARCH 13, 2013

JOB NUMBER:

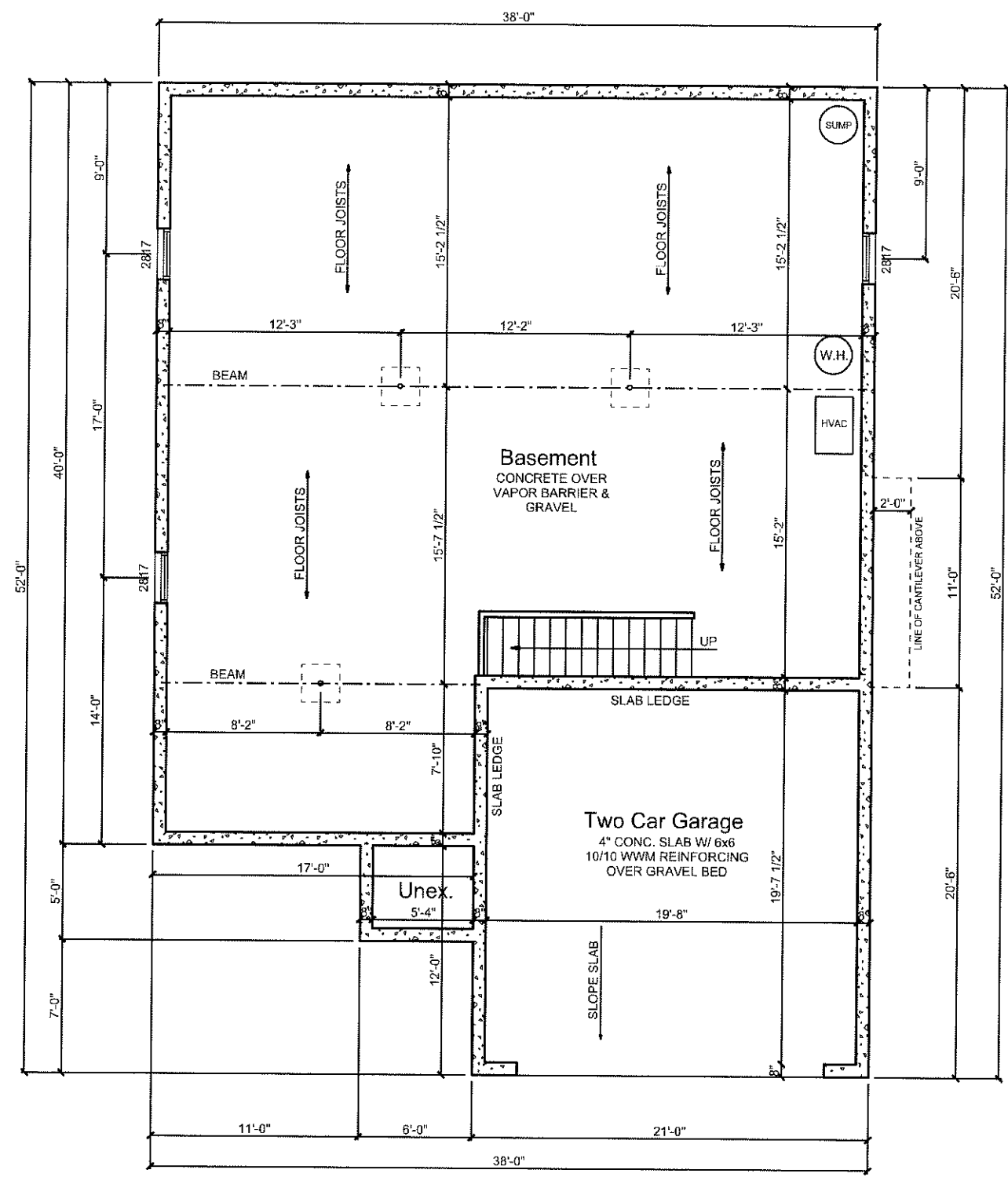
13-15

**2** OF **3**

**FLOOR PLAN**

1,335 SQUARE FEET SCALE: 1/8" = 1'-0"

NOTE:  
 - 8'-0" HIGH X 8" WIDE POURED  
 CONCRETE FOUNDATION WALLS  
 REINFORCEMENT: HORIZONTAL -  
 (1) #4 BAR 12" FROM TOP & (1) #4  
 BAR NEAR MID-HEIGHT OF WALL  
 VERTICAL - #4 BAR @ 48" O.C.



**BON TON BUILDERS, INC.**  
 1060 BALTIMORE STREET  
 HANOVER, PA 17331  
 717.637.4136

**PROJECT:**  
 906 SHERWOOD  
 DRIVE  
 HANOVER, PA 17331

**DATE:**  
 MARCH 13, 2013

**JOB NUMBER:**  
 13-15

**BASEMENT PLAN**  
 SCALE: 1/8" = 1'-0"

**3** OF **3**